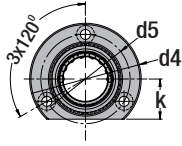


**Flanşlı Kılavuz Burç  
Bilyalı Kafes**

Kod: G 72.1

\* Ürünü sabitlemek için 3 adet "IMB" kodlu civata kullanılır.

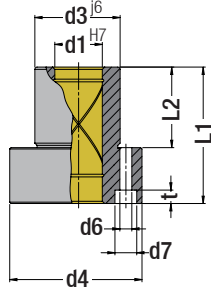
\* Civatalar ve "G70" kodlu burç ayrıca sipariş edilmelidir.



Order: **G72.1** d1 x L1 x L2

Malzeme: 1.7131 (16MnCr5)  
Sertlik: 58 - 62 HRC

d1	d2	d3	d4	d5	d6	d7	t	k	L	L1	L2	L3
19	25	32	50	40	4.5	8	5	18	44	38	23	15
20	26								56	45	30	
									72	52	37	
24	30	40	63	50	5.5	10	6	23	44	38	23	15
25	31								44	55	30	25
									72	62	37	
									55	45	30	
30	38	48	72	58	5.5	10	6	28	70	62	37	25
									80	72	47	
									65	55	30	
38	46	58	85	70	7	11	7	33	80	67	37	30
									95	77	47	
									80	62	37	
48	56	70	104	86	9	15	9	38	95	89	47	42
									120	102	60	
									95	89	47	
60	68	85	120	100	9	15	9	46	120	102	60	42
									120	102	60	
									120	102	60	
80	92	105	148	125	12	18	12	56	140	125	75	50

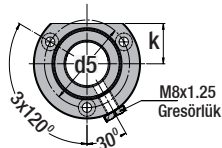


**Flanşlı Kılavuz Burç  
Bronz Yataklı**

Kod: G 72.2

\* Ürünü sabitlemek için 3 adet "IMB" kodlu civata kullanılır.

\* Civatalar ayrıca sipariş edilmelidir.



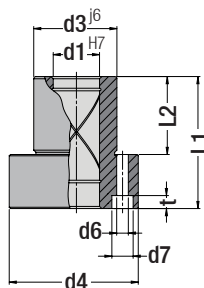
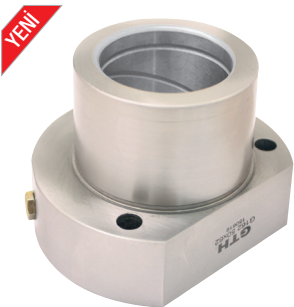
Order: **G72.2** d1 x L1 x L2

Malzeme: 1.1213 (Cf53)  
Bronz Döküm

Flanşlı, Kılavuz Burç - Bronz Yataklı

Kod: G 72.2

d1	d3	d4	d5	d6	d7	t	k	L1	L2
19	32	50	40	4.5	8	5	18	38	23
20								45	30
								52	37
24	40	63	50	5.5	10	6	23	38	23
25								55	30
									62
30	48	72	58	5.5	10	6	28	45	30
32								62	37
									72
38	58	85	70	6.6	11	7	33	55	30
40								67	37
									77
48	70	104	86	9	15	9	38	62	37
50								89	47
									102
60	85	120	100	9	15	9	46	89	47
63								102	60
									102
80	105	146	125	11	18	12	56	125	75

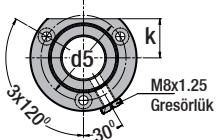


**Flanşlı Kılavuz Burç  
Çelik Yataklı**

Kod: G 72.3

\* Ürünü sabitlemek için 3 adet "IMB" kodlu civata kullanılır.

\* Civatalar ayrıca sipariş edilmelidir.



Order: **G72.3** d1 x L1 x L2

Malzeme: 1.7131 (16MnCr5)  
Sertlik: 58 - 62 HRC

Flanşlı, Kılavuz Burç - Çelik Yatak

Kod: G 72.3

d1	d3	d4	d5	d6	d7	t	k	L1	L2
19	32	50	40	4.5	8	5	18	38	23
20								45	30
								52	37
24	40	63	50	5.5	10	6	23	38	23
25								55	30
									62
30	48	72	58	5.5	10	6	28	45	30
32								62	37
									72
38	58	85	70	6.6	11	7	33	55	30
40								67	37
									77
48	70	104	86	9	15	9	38	62	37
50								89	47
									102
60	85	120	100	9	15	9	46	89	47
63								102	60
									102
80	105	146	125	11	18	12	56	125	75